



THE UNIVERSITY *of* EDINBURGH



## THE UNIVERSITY *of* EDINBURGH

Module:	ECCITING
Lecture:	User guide to the Lectures & MCQ questionnaire
Description:	Orientation to the lecture & MCQ environment
Author:	Prof AJ Farrall



THE UNIVERSITY *of* EDINBURGH

## Objectives

- Become familiar with the ECCITING online environment
- Know how to:
  - Find the lectures
  - Navigate the lectures & downloads
  - Find the MCQs
  - Navigate the MCQs
  - Return to the ECCITING dashboard to find the ECCITING Cases



**This slide contains an animation or narration. Press the play button to view it.**

### Voiceover:

Become familiar with the ECCITING online environment

Know how to:

Find the lectures

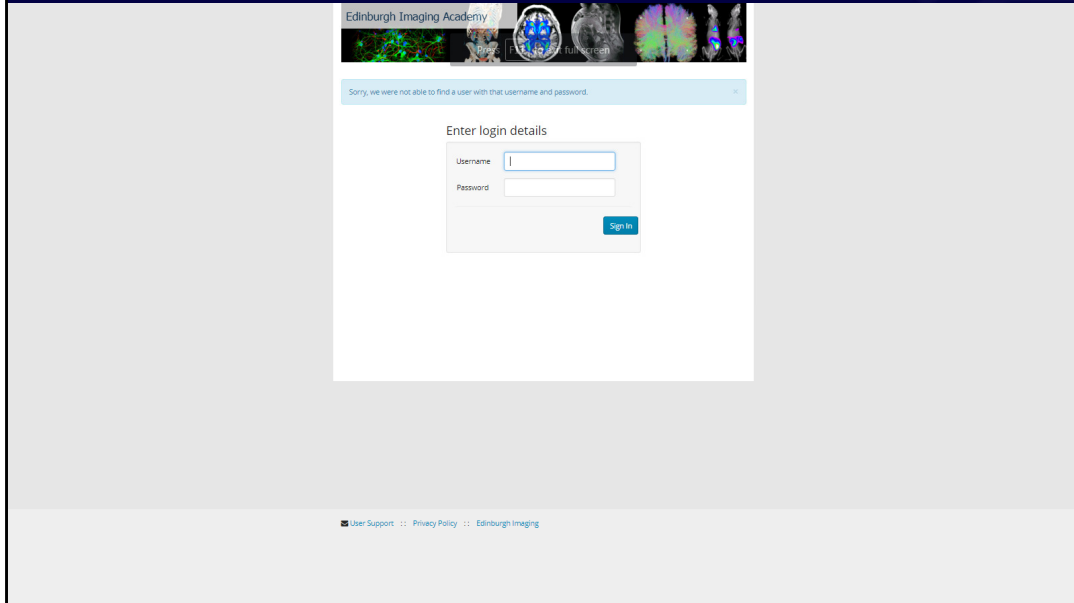
Navigate the lectures & downloads

Find the MCQs

Navigate the MCQs

Return to the ECCITING dashboard to find the ECCITING Cases

# Logging in to ECCITING

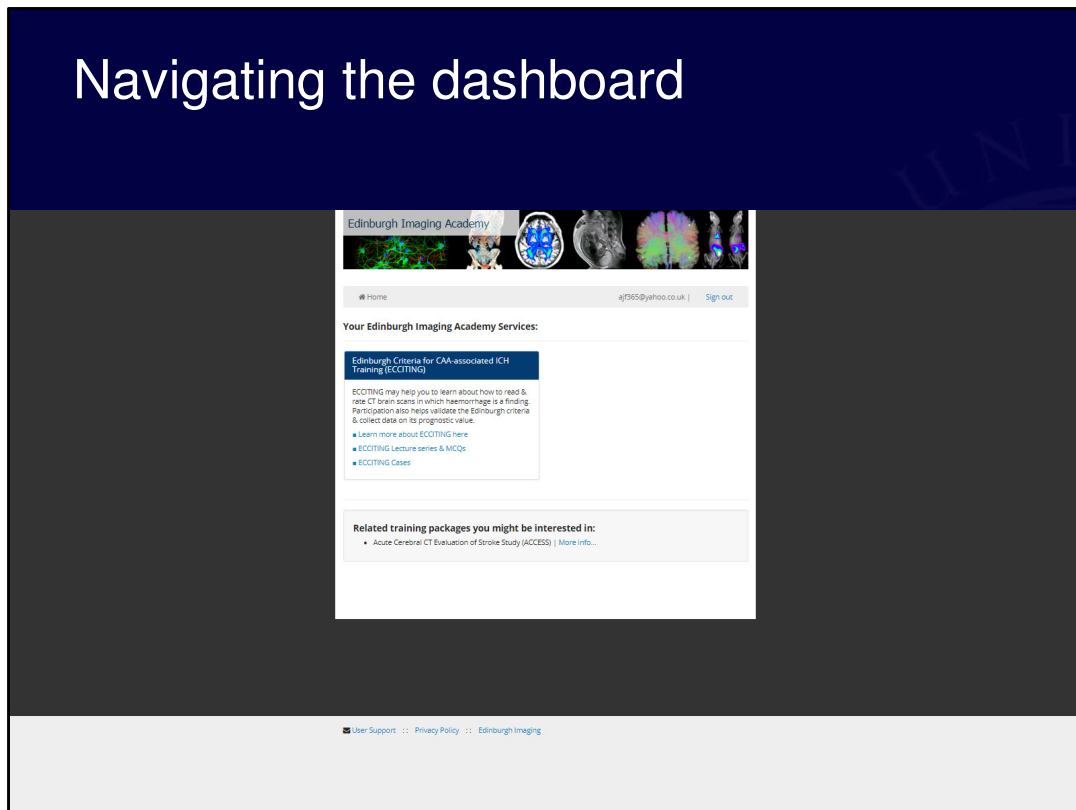


**This slide contains an animation or narration. Press the play button to view it.**

**Voiceover:**

Login using your username (usually your eMail) & the password we have sent you by eMail.

# Navigating the dashboard



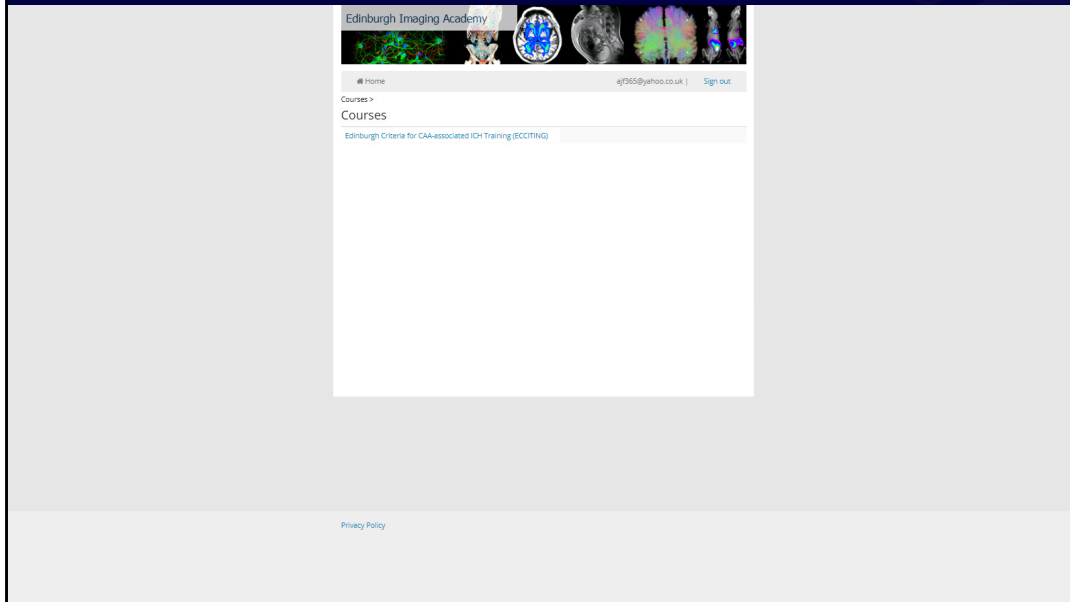
**This slide contains an animation or narration. Press the play button to view it.**

## **Voiceover:**

The ECCITING box on your dashboard includes three links:

1. “Learn more about ECCITING here” which will take you to our public website, which explains what ECCITING is all about.
2. “ECCITING Lecture series & MCQs” – click here to go through the three lectures & to complete the 10 question MCQ self-assessment on lecture content. The MCQs can be found after Lecture 3.
3. “ECCITING Cases” – click here once you have completed the lecture series & MCQs to put into practice what you have learnt.

# Clicking through to lectures & MCQ

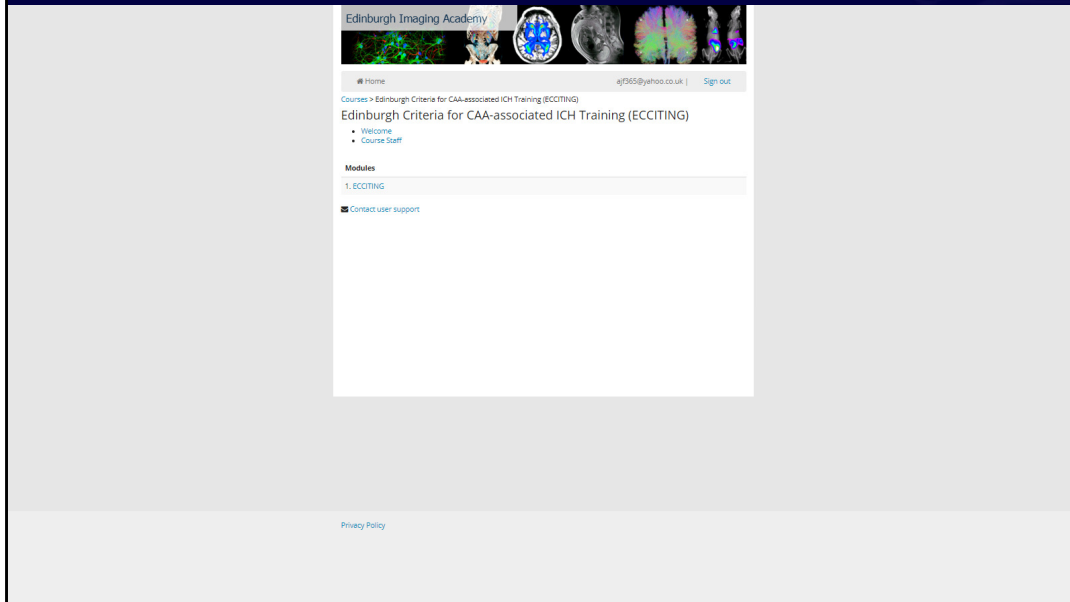


**This slide contains an animation or narration. Press the play button to view it.**

**Voiceover:**

Having clicked on “ECCITING Lecture series & MCQs” you will arrive here & need to click on “Edinburgh Criteria for CAA-associated ICH Training (ECCITING)”

# Clicking through to lectures & MCQ



**This slide contains an animation or narration. Press the play button to view it.**

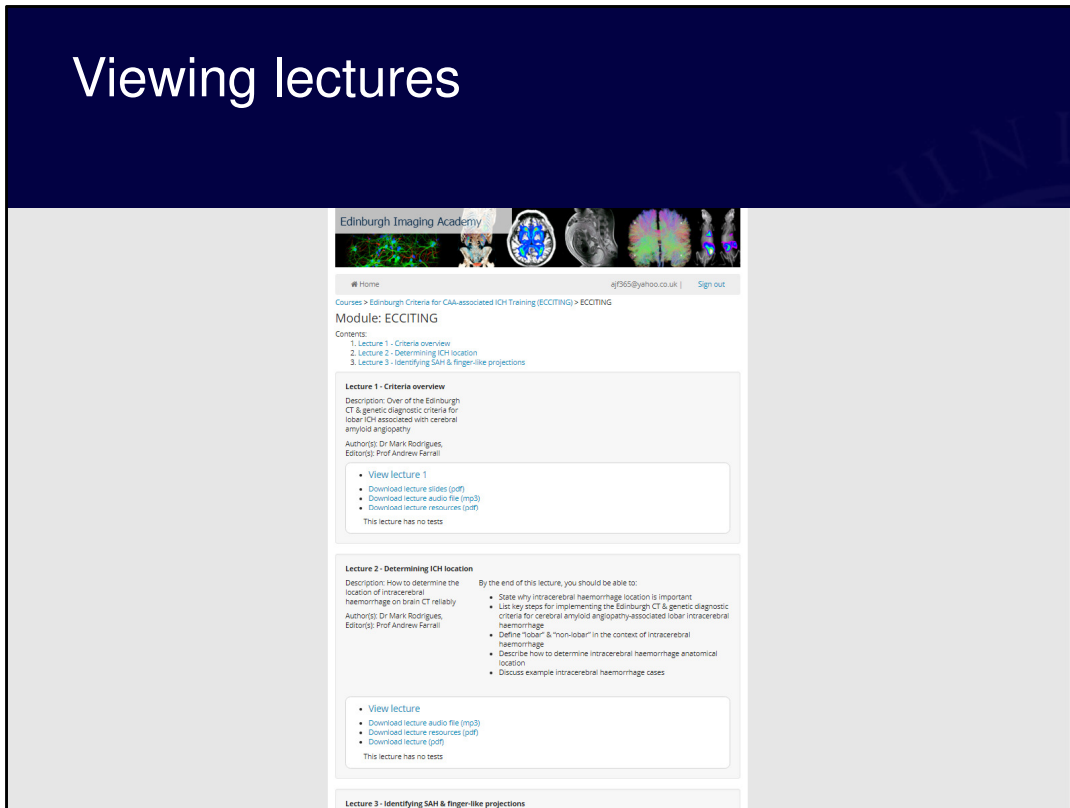
**Voiceover:**

Having clicked on “Edinburgh Criteria for CAA-associated ICH Training (ECCITING)”, you will arrive here.

We are still in the beta-test phase of this learning module & in the future, we will streamline the page you have to click through to get to the lectures & MCQs.

Click on “1. ECCITING” to get to the lecture list.

# Viewing lectures



Edinburgh Imaging Academy

Home | a1565@yahoo.co.uk | Sign out

Courses > Edinburgh Criteria for CAA-associated ICH Training (ECCITING) > ECCITING

Module: ECCITING

Contents:

- Lecture 1 - Criteria overview
- Lecture 2 - Determining ICH location
- Lecture 3 - Identifying SAH & finger-like projections

**Lecture 1 - Criteria overview**

Description: Over of the Edinburgh CT & genetic diagnostic criteria for lobar ICH associated with cerebral amyloid angiopathy

Author(s): Dr Mark Rodrigues, Editor(s): Prof Andrew Farnell

- View lecture 1
- Download lecture slides (pdf)
- Download lecture audio file (mp3)
- Download lecture resources (pdf)

This lecture has no tests

**Lecture 2 - Determining ICH location**

Description: How to determine the location of intracerebral haemorrhage on brain CT reliably

Author(s): Dr Mark Rodrigues, Editor(s): Prof Andrew Farnell

By the end of this lecture, you should be able to:

- State why intracerebral haemorrhage location is important
- List key steps for implementing the Edinburgh CT & genetic diagnostic criteria for cerebral amyloid angiopathy-associated lobar intracerebral haemorrhage
- Define "lobar" & "non-lobar" in the context of intracerebral haemorrhage
- Describe how to determine intracerebral haemorrhage anatomical location
- Discuss example intracerebral haemorrhage cases

- View lecture
- Download lecture audio file (mp3)
- Download lecture resources (pdf)
- Download lecture (pdf)

This lecture has no tests

Lecture 3 - Identifying SAH & finger-like projections

**This slide contains an animation or narration. Press the play button to view it.**

## Voiceover:

Having clicked on "1. ECCITING" to get to the lecture list, each of the three lectures is listed, along with summary information, author information & learning objectives.

Click on "View lecture 1" to start lecture 1 playing.

You can download a pdf of the lecture & voiceover to print off & follow along & make notes.

You can download the voiceover as an audio file to listen to in the car, on the bus or wherever you are where you want to re-enforce the learning away from a computer or device.

You can download a list of resources for further reading for each lecture.



# Finding the MCQ link

The screenshot displays a course page with the following content:

- Download lecture resources (pdf)**  
This lecture has no tests
- Lecture 2 - Determining ICH location**  
Description: How to determine the location of intracerebral haemorrhage on brain CT reliably  
Author(s): Dr Mark Rodriguez, Editor(s): Prof Andrew Farrall  
By the end of this lecture, you should be able to:
  - State why intracerebral haemorrhage location is important
  - List key steps for implementing the Edinburgh CT & genetic diagnostic criteria for cerebral amyloid angiopathy-associated lobar intracerebral haemorrhage
  - Define "lobar" & "non-lobar" in the context of intracerebral haemorrhage
  - Describe how to determine intracerebral haemorrhage anatomical location
  - Discuss example intracerebral haemorrhage cases
- View lecture**
  - Download lecture audio file (mp3)
  - Download lecture resources (pdf)
  - Download lecture (pdf)

This lecture has no tests
- Lecture 3 - Identifying SAH & finger-like projections**  
Description: Methods which allow reliable identification of SAH & finger-like projections on brain CT  
Author(s): Dr Mark Rodriguez, Editor(s): Prof Andrew Farrall  
By the end of this lecture, you should be able to:
  - On a brain CT scan with ICH:
    - Describe how to assess for SAH
    - Describe how to identify finger-like projections
  - State why SAH & finger-like projections are important
    - Include key implementation steps for the Edinburgh CT & genetic diagnostic criteria for CAA-associated lobar ICH
  - Discuss example ICH cases
- View lecture 3**
  - Download lecture slides (pdf)
  - Download lecture audio file (mp3)
  - Download lecture resource (pdf)

Test your understanding with ECCITING exit MCQ assessment. You have not taken this test yet

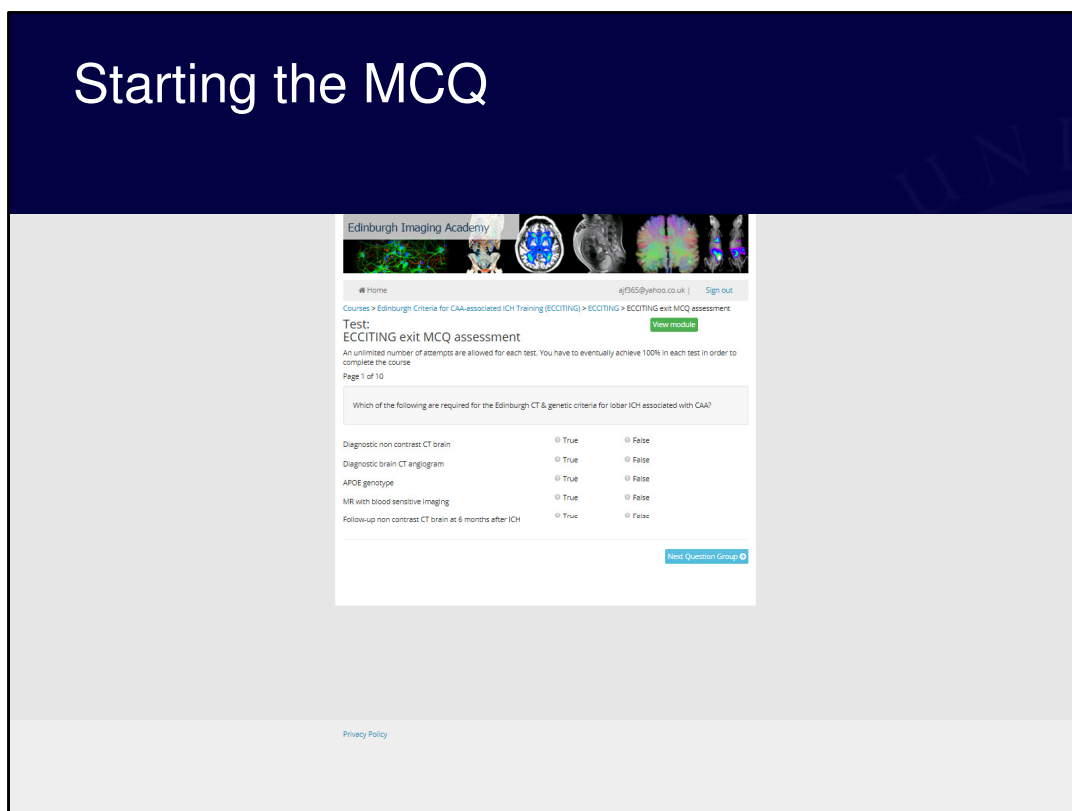
Privacy Policy

**This slide contains an animation or narration. Press the play button to view it.**

**Voiceover:**

Scrolling down to Lecture 3, you will see a link at the bottom to "Test your understanding with ECCITING exit MCQ assessment"

# Starting the MCQ

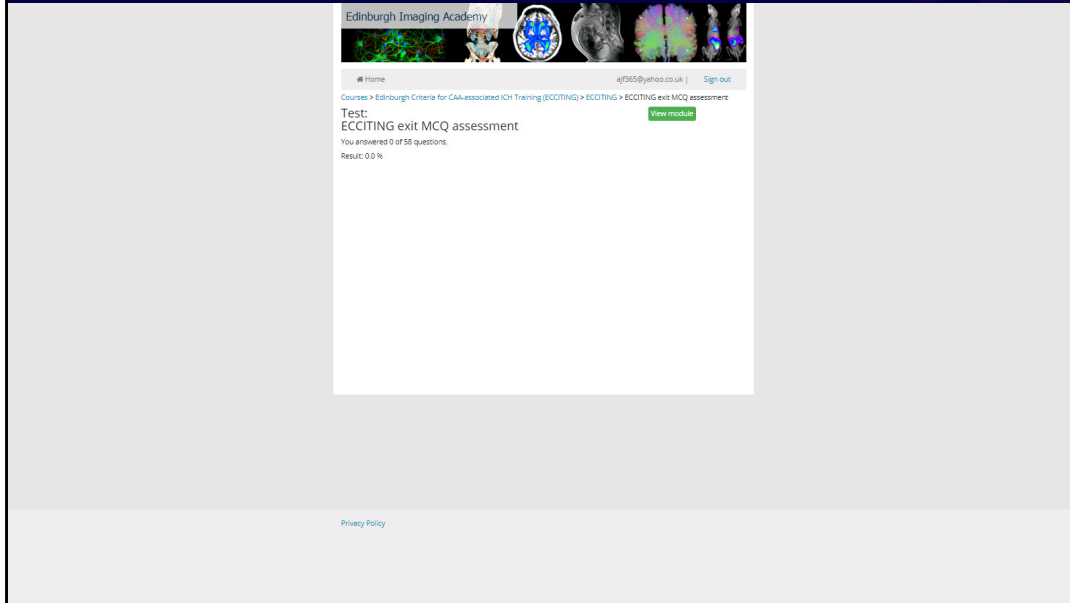


**This slide contains an animation or narration. Press the play button to view it.**

**Voiceover:**

Clicking on the link “Test your understanding with ECCITING exit MCQ assessment” will start the MCQ assessment which you can navigate through using the blue buttons at the bottom of the screen.

# Navigating back to the dashboard



**This slide contains an animation or narration. Press the play button to view it.**

## **Voiceover:**

Once you have finished the MCQ assessment, your score will be displayed.

If you have not got 100%, click on “View Module” to review the lectures before returning to the MCQ, identify which questions you have answered incorrectly & enter the correct answers.

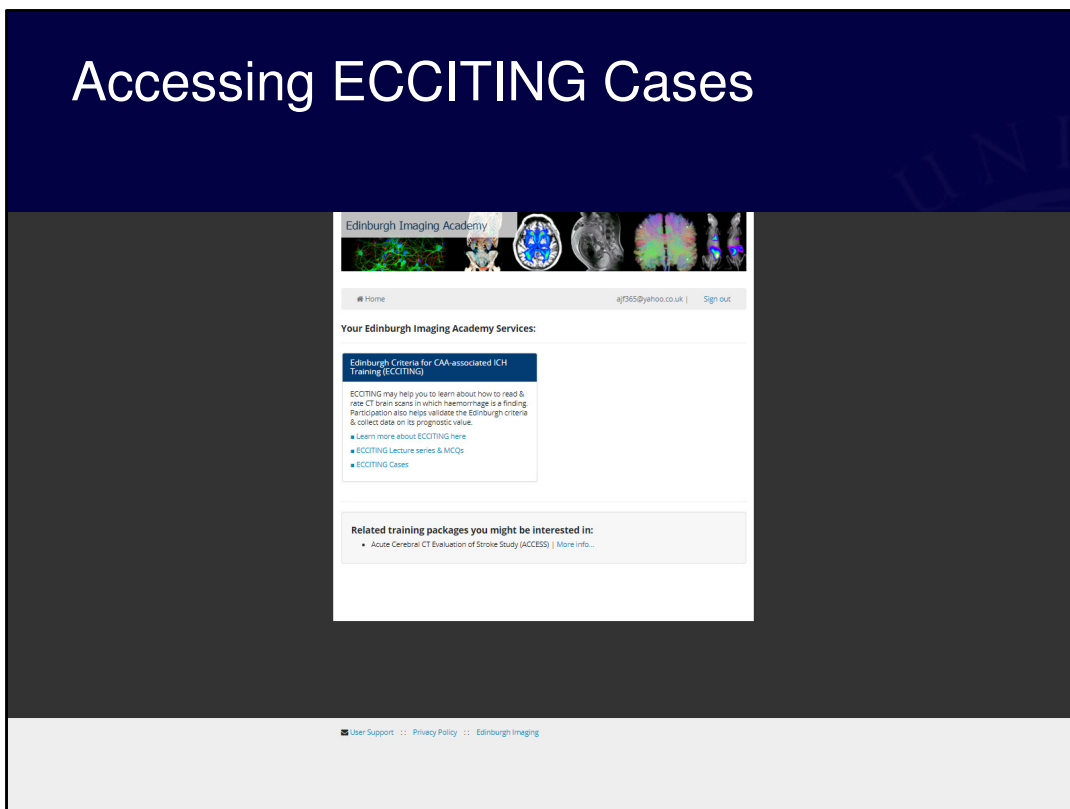
Once you do have 100% for the MCQ, you are ready to go on to the Case questionnaire.

To do this you will need to re-enter the address of the ECCITING portal:

<http://elearn.cbs.ed.ac.uk/portal/>

Again, in this beta-test version, we have still to create a button to take you directly there, but will sort this out early in 2019.

# Accessing ECCITING Cases



**This slide contains an animation or narration. Press the play button to view it.**

**Voiceover:**

Having re-entered the address of the ECCITING portal:

<http://elearn.cbs.ed.ac.uk/portal/> you can click on “ECCITING Cases” to go to the case review.

Instructions for navigating the case review section are in a separate pdf document.



THE UNIVERSITY *of* EDINBURGH

### Objectives review

- Become familiar with the ECCITING online environment
- Know how to:
  - Find the lectures
  - Navigate the lectures & downloads
  - Find the MCQs
  - Navigate the MCQs
  - Return to the ECCITING dashboard to find the ECCITING Cases



**This slide contains an animation or narration. Press the play button to view it.**

#### **Voiceover:**

Become familiar with the ECCITING online environment

Know how to:

Find the lectures

Navigate the lectures & downloads

Find the MCQs

Navigate the MCQs

Return to the ECCITING dashboard to find the ECCITING Cases



THE UNIVERSITY *of* EDINBURGH