

What are the benefits of the SCONE retinal image resource?

Better understanding of eye and brain disease

Better understanding of general health conditions

Better outcomes for patients

Support community optometrists

For more information about SCONE, please visit our website
www.ed.ac.uk/clinical-sciences/ophthalmology/scone



We are grateful for the support of the following organisations:

- Sight Scotland,
- The Royal College of Surgeons of Edinburgh,
- RS Macdonald Charitable Trust,
- Fight For Sight,
- NHS Lothian Charity,
- Chief Scientist Office,
- Eisai,
- Gates Ventures,
- LifeArc,
- HDR UK,
- Research Data Scotland,
- Action Against AMD,
- EPCC,
- Public Health Scotland.

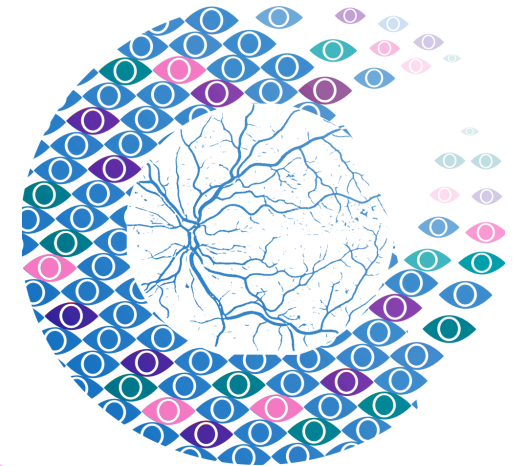
SCONE also has the backing of the Scottish Government.

If you require this leaflet in large print, please email ask.scone@ed.ac.uk

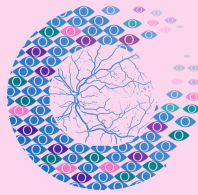
This practice is part of the SCONE network



Patient Information Leaflet



Building a world-leading retinal image resource for innovation in health research, healthcare, and education.



What is SCONE?

The **Scottish Collaborative Optometry-Ophthalmology Network e-research (SCONE)** is a collaborative venture building a **world-leading Scotland-wide retinal image resource** for innovation in health research, healthcare and education.

Why is SCONE important?

The retina may show signs that predict disease before symptoms appear.

The SCONE retinal image resource will allow approved researchers to work towards **discovering new information about eye and general health diseases** such as:

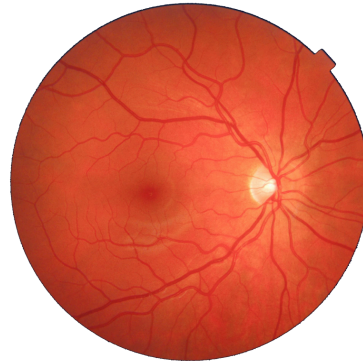
- Age-related macular degeneration (AMD),
- Glaucoma,
- Cardiovascular disease,
- Dementia.

Research on SCONE images will **benefit patients** by helping healthcare professionals to spot signs of disease earlier.



My optometrist is part of the SCONE network. What does this mean?

Retinal images captured in your optometrist's practice have contributed to this unique retinal imaging resource. All images have been **securely transferred** to the **National Safe Haven** by the SCONE team.



Will my data be safe?

The **National Safe Haven (NSH)** is a secure storage facility run by **Public Health Scotland**. Your data will not be shared outwith this secure storage facility, and Public Health Scotland will control who has access to the data.

Once the data is in the National Safe Haven, it is **pseudonymised** so **no personal identifiable information is visible to researchers**.

What governance does SCONE's work follow?

The linkage of community-acquired retinal images to NHS data and the research work we are conducting has been approved by **NHS Scotland's Public Benefit and Privacy Panel for Health and Social Care (HSC-PBPP)**.

All research conducted using the SCONE resource is carried out inside the NSH (with ethical approval) which imposes a set of stringent rules to ensure that data are **safe, secure and that no individual is ever at risk of disclosure**.

I have more questions. Who can I ask?

Visit our website by scanning the QR code on the back of this leaflet, or email us at **ask.scone@ed.ac.uk**

SCONE is a collaboration between:



University for the Common Good

